

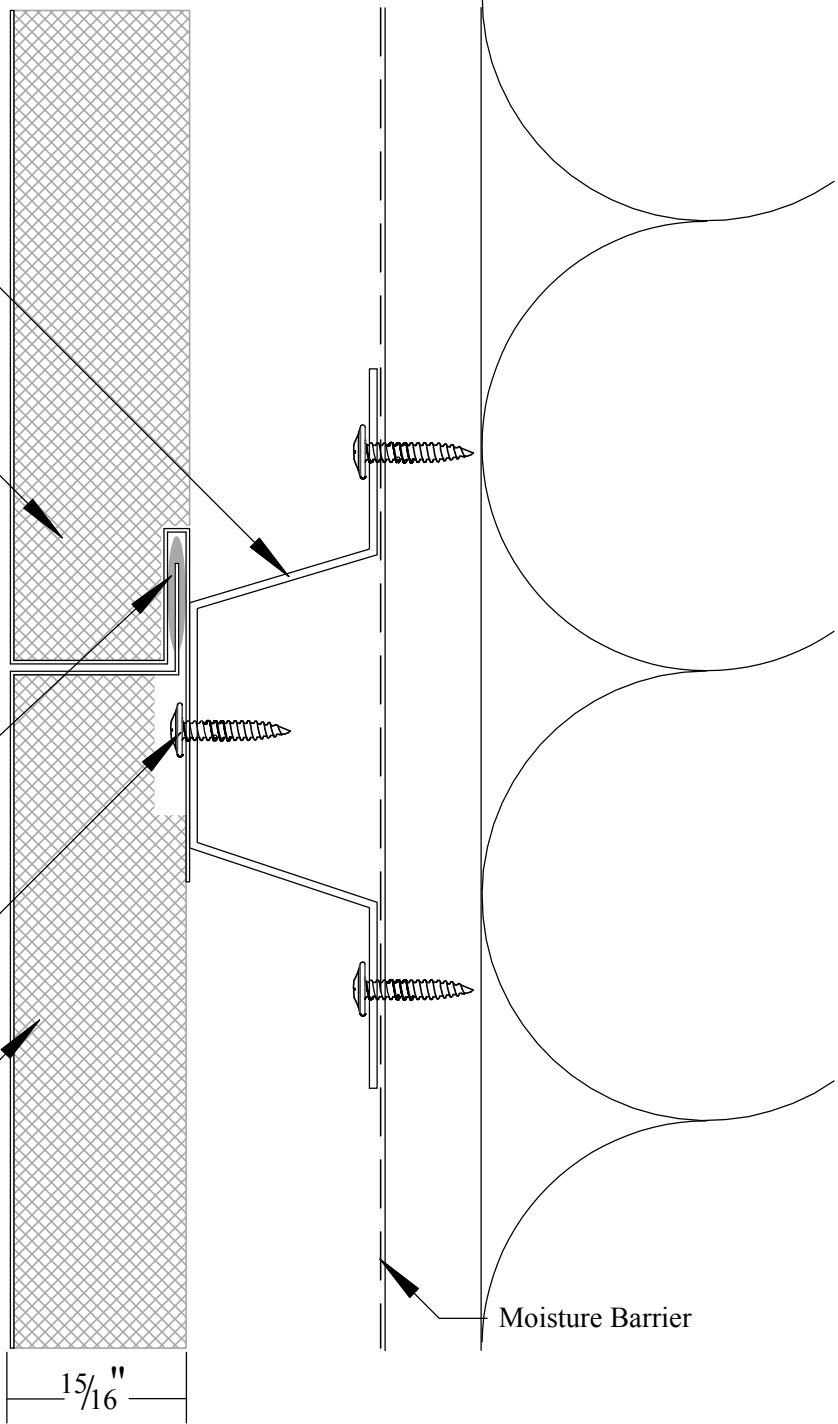
20 Ga. Galvanized or Zincalume
standoff can be formed as zee, cee
or hat and vary in depth as per spec
Panels may also be mounted directly to substrate
(ASTM tested with all configurations)

Fully Adhered 1" ISO Stiffener
(R 6.2 per inch)

Field applied butyl sealant in
female rib (per mfg. requirements)

Panels attach to stand off with
#8 modified truss head screw

Typical 22 ga. Kynar Painted
Zincalume Coated Steel
(Also available in aluminum)



TYPICAL HORIZONTAL JOINT

December 2009

MF-ISO-D1
090-01

Metposite STD 1" ISO

Copyright (c) 2008 Metposite LLC, all rights reserved under U.S. and international law



Metposite LLC

2983 D Street Hubbard, Oregon 97932
P 503.981.5900 F 503.981.5901
www.metposite.com