

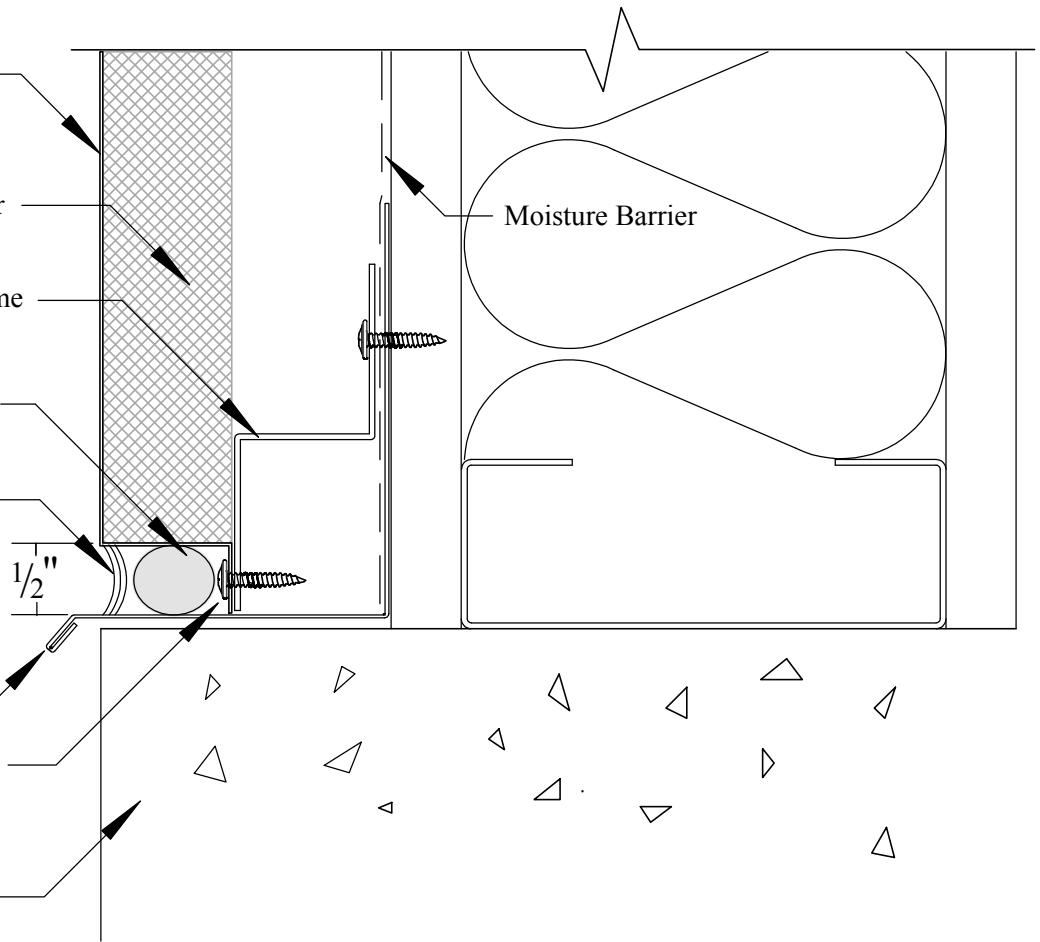
Typical 22 ga. Kynar Painted  
Zincalume Coated Steel  
(Also available in aluminum)

Fully Adhered 1" ISO Stiffener  
(R 6.2 per inch)

20 Ga. Galvanized or Zincalume  
standoff (depth as per spec)

Non-gassing backer foam rod  
(see specification for type)

Continuous caulking  
(see specification for type)



Drip flashing

Panels attach to stand off with  
#8 modified truss head screw

Base condition as occurs

## TYPICAL BASE JOINT

December 2009

**MS-ISO-D3**  
010-03

# Metposite STD 1" ISO

Copyright (c) 2008 Metposite LLC, all rights reserved under U.S. and international law



**Metposite LLC**

2983 D Street Hubbard, Oregon 97932  
P 503.981.5900 F 503.981.5901  
www.metposite.com