

20 Ga. Galvanized or Zincalume
standoff can be formed as zee, cee
or hat and vary in depth as per spec
Panels may also be mounted directly to substrate
(ASTM tested with all configurations)

Fully Adhered 1" ISO Stiffener
(R 6.2 per inch)

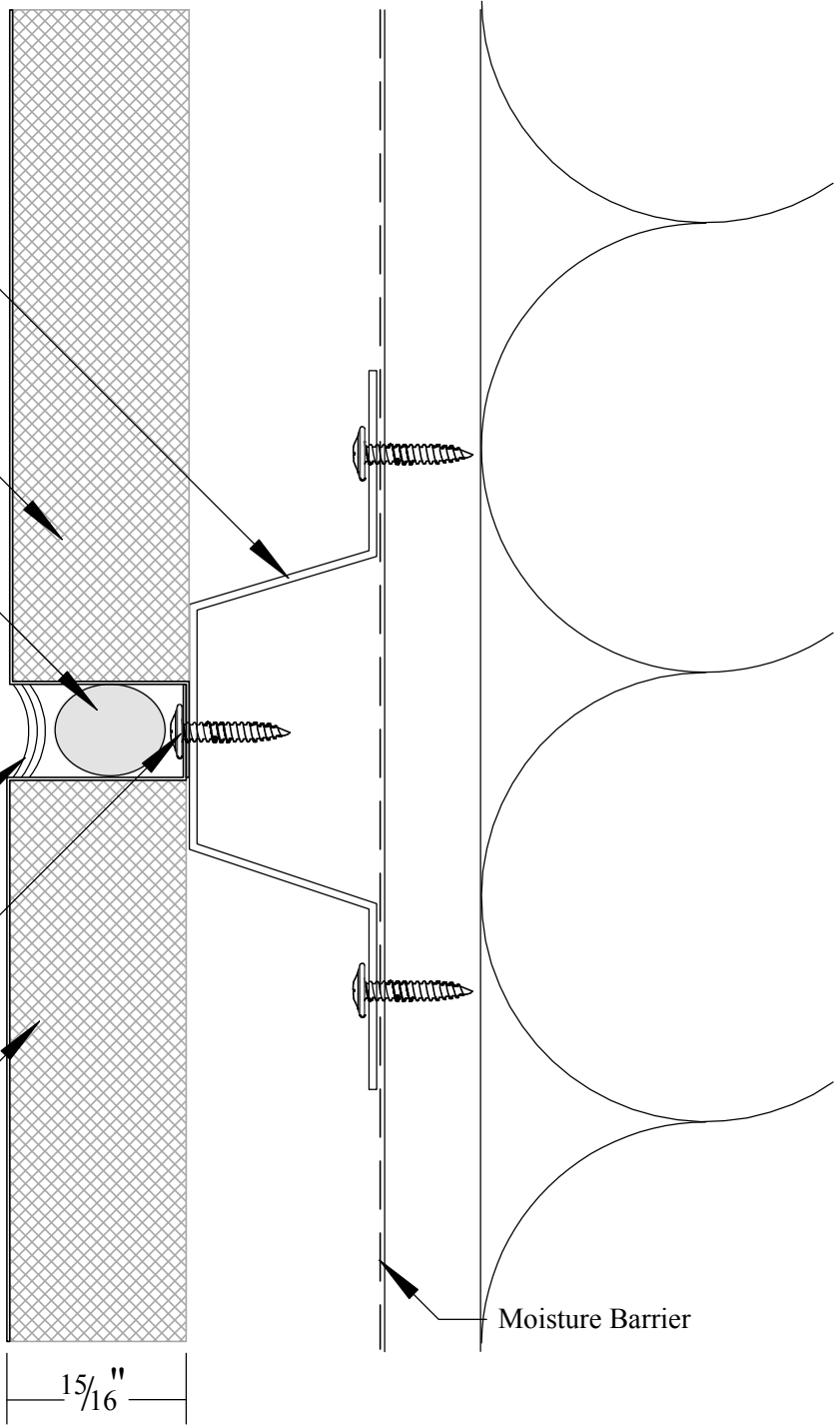
Non-gassing backer foam rod
(see specification for type)

1/2"

Continuous caulking
(see specification for type)

Panels attach to stand off with
#8 modified truss head screw

Typical 22 ga. Kynar Painted
Zincalume Coated Steel
(Also available in aluminum)



Moisture Barrier

TYPICAL HORIZONTAL JOINT

December 2009

MS-ISO-D1
010-01

Metposite STD 1" ISO

Copyright (c) 2008 Metposite LLC, all rights reserved under U.S. and international law



Metposite LLC
2983 D Street Hubbard, Oregon 97932
P 503.981.5900 F 503.981.5901
www.metposite.com