

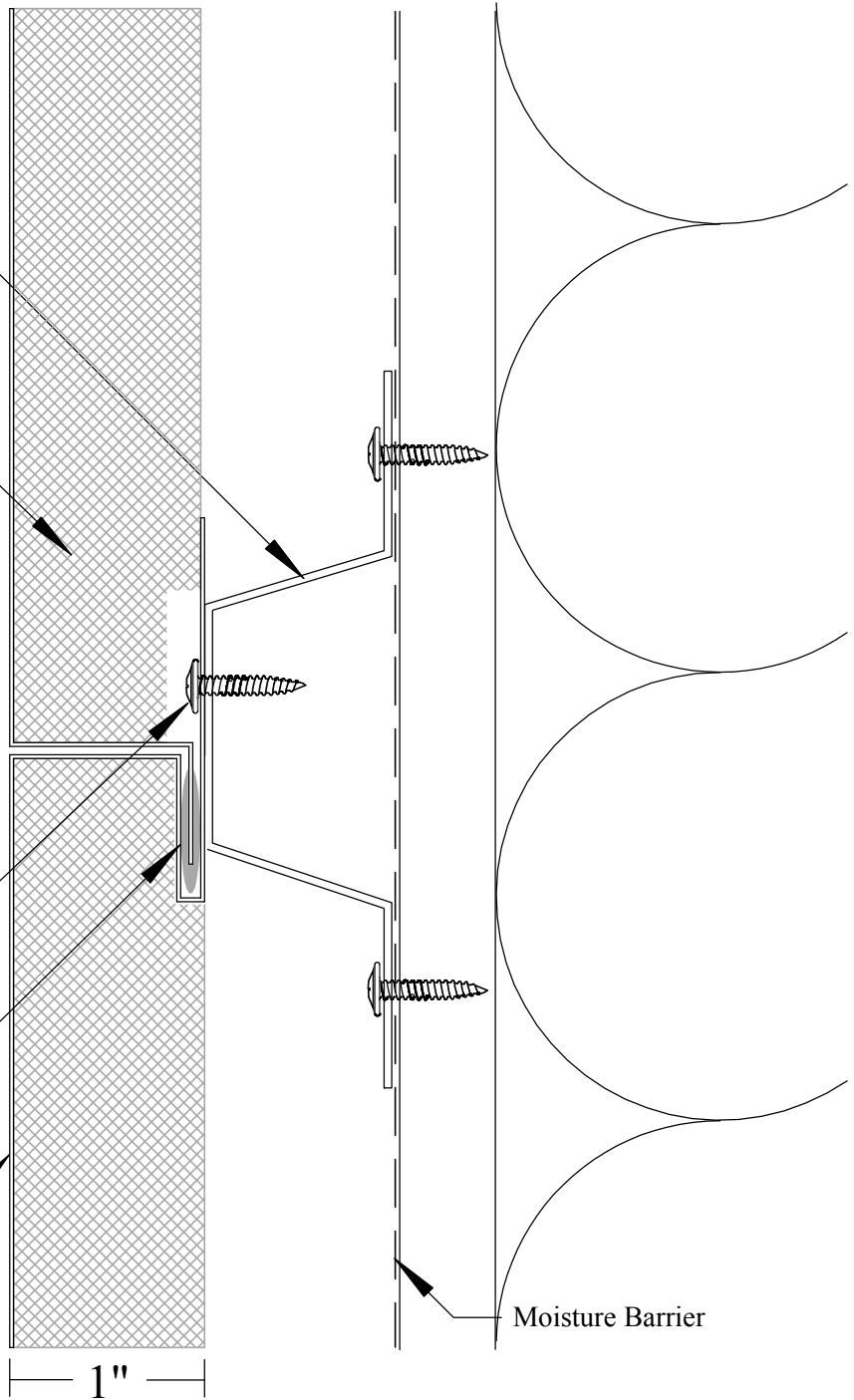
20 Ga. Galvanized or Zinalume
standoff can be formed as zee, cee
or hat and vary in depth as per spec
Panels may also be mounted directly to substrate
(ASTM tested with all configurations)

Fully Adhered 1" ISO Stiffener
(R 6.2 per inch)

Panels attach to stand off with
#8 modified truss head screw

Field applied butyl sealant in
female rib (per mfg. requirements)

Typical 22 ga. Kynar Painted
Zinalume Coated Steel
(Also available in aluminum)



TYPICAL HORIZONTAL JOINT

May 2009

MF2-ISO-D1

Metposite Met-Flush II 1" ISO

Copyright (c) 2008 Metposite LLC, all rights reserved under U.S. and international law



WWW.METPOSITE.COM
METPOSITE™

FLAT METAL WALL PANELS

PO Box 156 Hubbard, Oregon 97032
503.981.5900 fax 503.981.5901
www.metposite.com